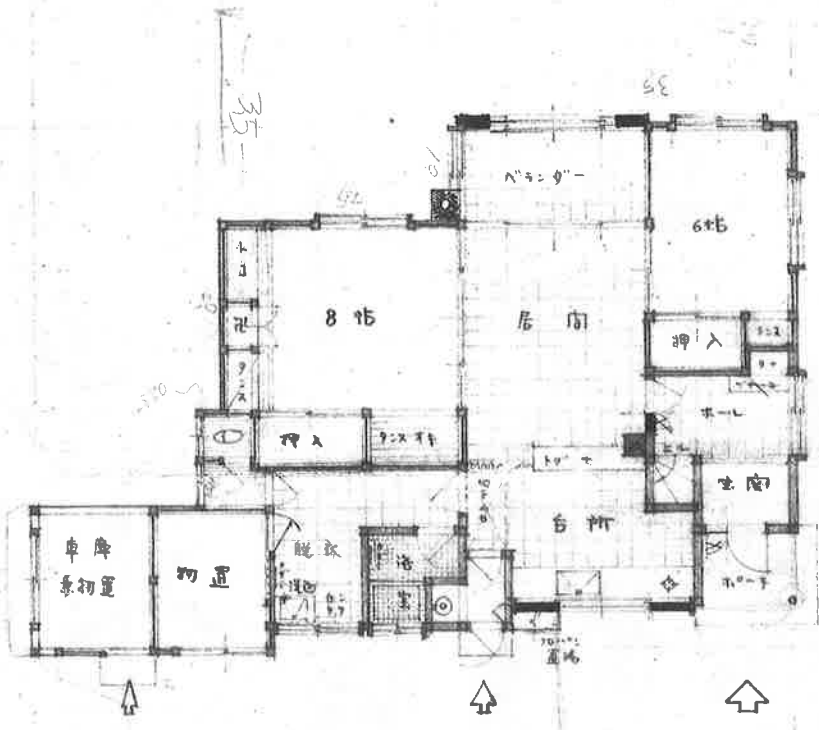


$3.150 + 450 = 3.600$   
 $2.250 + 900 + 1.650 = 4.800$   
 $4.500 + 3.900 = 8.400$   
 $6.300 + 2.700 = 9.000$   
 $14.400$



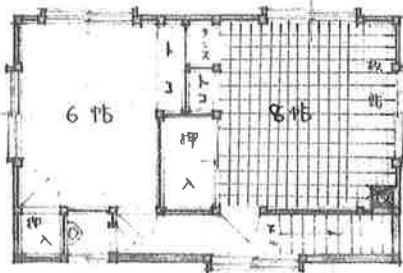
$1.350 + 1.350 + 1.650 + 1.050 = 5.400$   
 $3.600 + 9.000 = 12.600$   
 $450 + 450 = 900$

$2.250 + 2.250 + 1.800 + 1.800 + 900 + 3.600 + 1.800 = 14.400$

1階平面

面積	102.465 M <sup>2</sup>	(31.625 坪)
延面積	134.865 M <sup>2</sup>	(41.425 坪)

7.200  
 2.700 + 1.050 + 2.700 + 750  
 + 600  
 450



900 + 3.600  
 4.500

9.900  
 1.800 + 3.600 + 1.800  
 900 + 900 + 1.200 + 900 + 1.500

900 + 900 + 900 + 1.050 = 3.450  
 7.200

2 階 平 面

SCALE: 1/100

面積 | 32.40 M<sup>2</sup> (約 10.00 坪)  
 32.40 M<sup>2</sup>